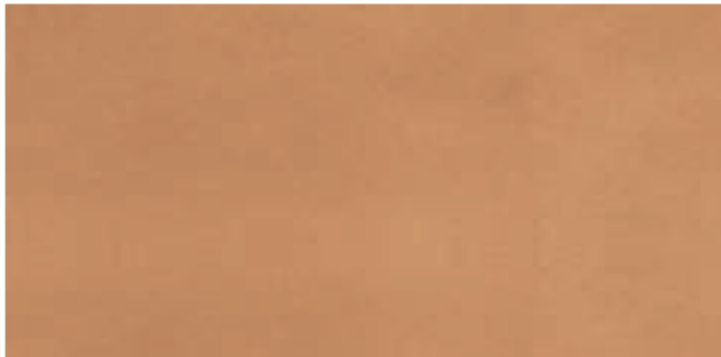


Finiture cuoio “pieno fiore”

“Full-grain” hide finishes / Ausführungen des “vollnarbigen” Leders / Acabados cuero “plena flor” / Finitions Cuir “pleine fleur”



F1 Naturale / Natural / Natur / Natural / Naturel



F2 Nero / Black / Schwarz / Negro / Noir



**Elephant
hide**



**Bikappa
hide**